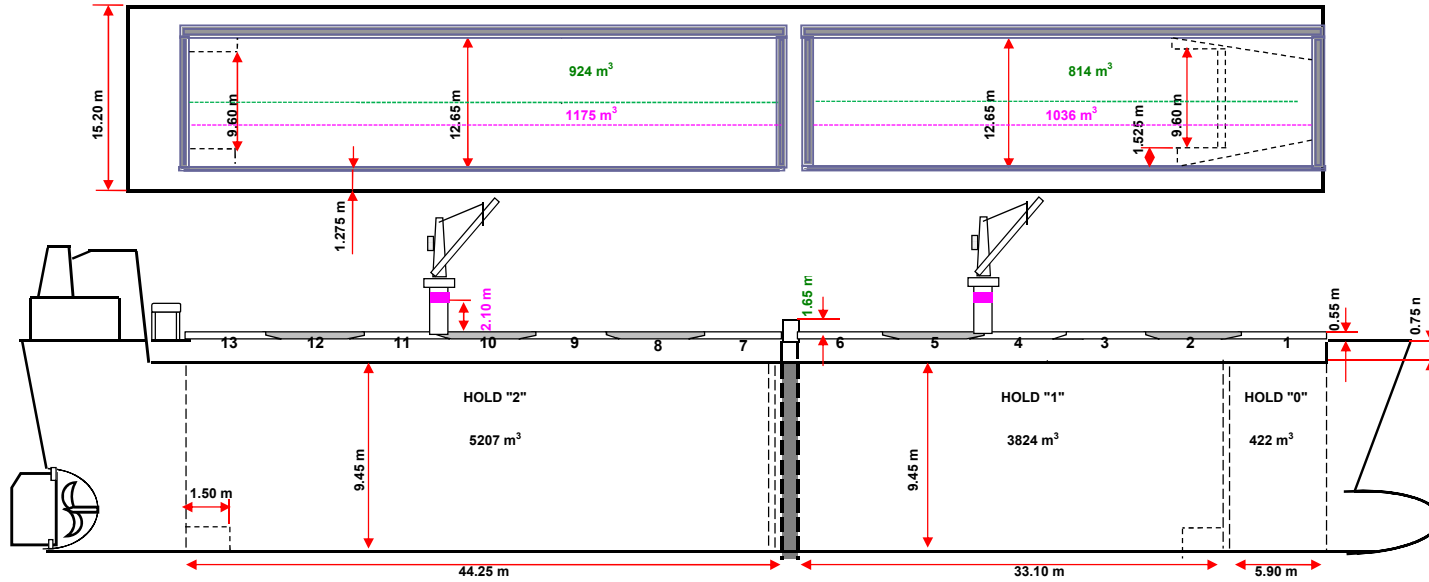


M/V BOTHNIA

General Cargo / Multipurpose dry cargo



Main dimensions:

| | | | | | | |
|------------------|----------|---------------|---------|----|-------------------|----------------------------|
| Lenght o.a. | 119,98 m | GRT | 5052 | mt | Tanktop strenght: | 15 tn / m2 |
| Lenght b.p. | 113,35 m | NRT | 2663 | mt | Hatch strenght: | 1.75 tn / m2 |
| Breadth | 15,20 m | DWT summer | 7795 | mt | Hatch covers: | Pontoon type |
| Summer draught | 7,032 m | DISP. Summer | 10379,6 | mt | Ventilation: | 6 - 7 air changes per hour |
| Winter draught | 6,885 m | Light ship | 2584 | mt | Tweendecks: | No |
| Freeboard summer | 1,429 m | Depth moulded | 8,45 | m | Cranes: | Yes |
| Freeboard winter | 1,576 m | FW allowance | 156 | mm | Deck stanchions: | Yes, 67 short + 92 long |

Hold dimensions:

| | |
|-------------------------------|--|
| Hold 0 | 5.90 m x 12.65 m x 9.45 m |
| Hold 1 | 33.10 m x 12.65 m x 9.45 m |
| Hold 2 | 44.25 m x 12.65 m x 9.45 m |
| Grain bulkhead: | 12.65 m x 0.44x9.40 m / 20 mt / 52 cbm |
| "0", "1" & "2" HOLDS CAPACITY | 9440.0 m³ / 333000 ft³ |
| L from D.L. to Main Deck | 1.45 m |

General information:

| | |
|------------|--------------------------------------|
| Type: | Dry Cargo / Multipurpose vessel |
| Call Sign: | OJSI |
| IMO Nr: | 9229087 |
| Flag: | Finnish |
| Home Port: | Turku |
| Built: | 2002 Bodewes Shipyards - NL / 606 |
| Class: | DNVGL |
| Ice Class: | Finnish/Swedish 1A / 100 A 5 (DNVGL) |
| P&I: | Gard |

Machinery:

| | |
|----------------------|------------------------------|
| Main Engine: | 1 x MAK 8M32 3840 kW |
| Auxiliary Engine: | 4 x 259 kW |
| Emergency Generator: | 1 x 96 kW |
| Shaft Generator: | 1 x 400 kW |
| Bow thruster: | 1 x 400 kW |
| Propeller: | Controllable Pitch Propeller |
| Speed (ballast): | 12 kn |
| Speed (loaded): | 11,5 kn |
| Consumption: | 12 mt / day |

Cranes:

| | |
|---------|----------|
| Cranes: | Yes, 2 |
| SWL: | 40 mts |
| Reach: | 3 - 25 m |
| Grabs: | No |

Tank capacity:

| | | |
|----------------|------|-----|
| Ballast water: | 3319 | cbm |
| HFO: | 556 | cbm |
| MGO: | 82 | cbm |
| Lub Oil: | 37 | cbm |
| Potable water: | 50 | cbm |

All figures stated above are given as "about", figures given in good faith but without guarantees