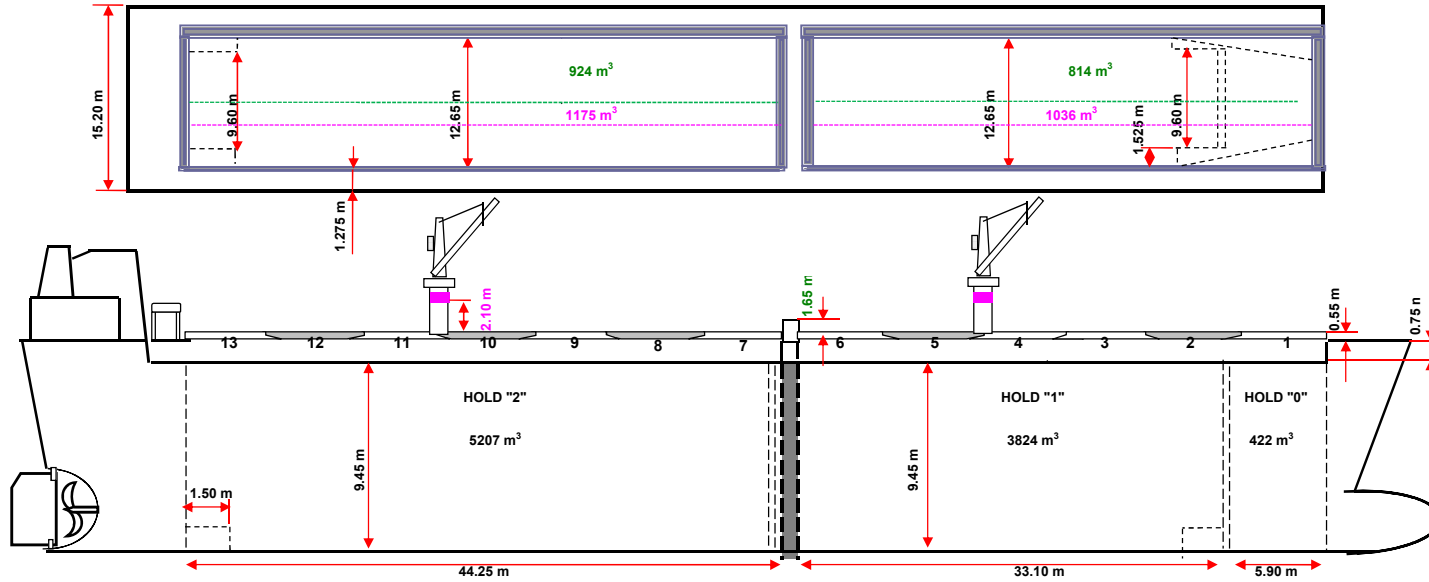


# M/V AURORA

General Cargo / Multipurpose dry cargo



### Main dimensions:

Lenght o.a.	119,98 m	GRT	5052	mt	Tanktop strenght:	15 tn / m2
Lenght b.p.	113,35 m	NRT	2663	mt	Hatch strenght:	1.75 tn / m2
Breadth	15,20 m	DWT summer	7795	mt	Hatch covers:	Pontoon type
Summer draught	7,032 m	DISP. Summer	10379,6	mt	Ventilation:	6 - 7 air changes per hour
Winter draught	6,885 m	Light ship	2584	mt	Tweendecks:	No
Freeboard summer	1,429 m	Depth moulded	8,45	m	Cranes:	Yes
Freeboard winter	1,576 m	FW allowance	156	mm	Deck stanchions:	Yes, 67 short + 92 long

### Hold dimensions:

Hold 0	5.90 m x 12.65 m x 9.45 m
Hold 1	33.10 m x 12.65 m x 9.45 m
Hold 2	44.25 m x 12.65 m x 9.45 m
Grain bulkhead:	12.65 m x 0.44x9.40 m / 20 mt / 52 cbm
"0", "1" & "2" HOLDS CAPACITY	9440.0 m³ / 333000 ft³
L from D.L. to Main Deck	1.45 m

### General information:

Type:	Dry Cargo / Multipurpose vessel
Call Sign:	OJSJ
IMO Nr:	9255579
Flag:	Finnish
Home Port:	Turku
Built:	2002 Bodewes Shipyards - NL / 607
Class:	DNVGL
Ice Class:	Finnish/Swedish 1A / 100 A 5 (DNVGL)
P&I:	Gard

### Machinery:

Main Engine:	1 x MAK 8M32 3840 kW
Auxiliary Engine:	4 x 259 kW
Emergency Generator:	1 x 96 kW
Shaft Generator:	1 x 400 kW
Bow thruster:	1 x 400 kW
Propeller:	Controllable Pitch Propeller
Speed (ballast):	12 kn
Speed (loaded):	11,5 kn
Consumption:	12 mt / day

### Cranes:

Cranes:	Yes, 2
SWL:	40 mts
Reach:	3 - 25 m
Grabs:	No

### Tank capacity:

Ballast water:	3319	cbm
HFO:	556	cbm
MGO:	82	cbm
Lub Oil:	37	cbm
Potable water:	50	cbm

All figures stated above are given as "about", figures given in good faith but without guarantees